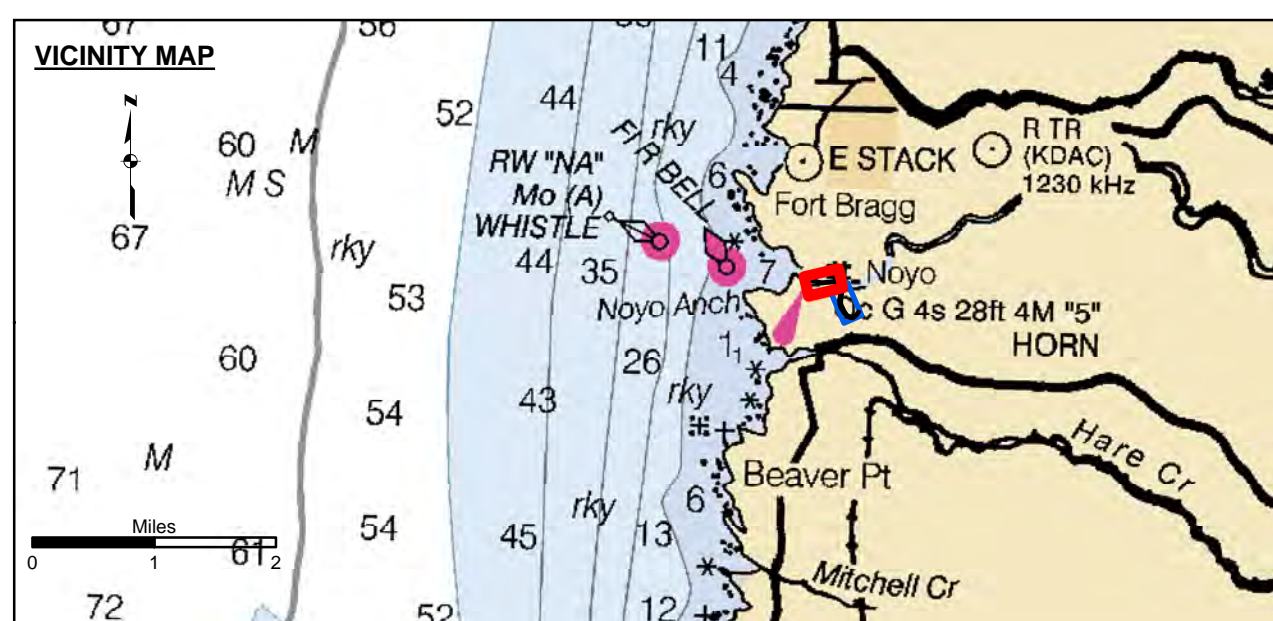


PRELIMINARY ISSUE
THIS PLAN ISSUED FOR
ADVANCE INFORMATION ONLY

Angle Point	Easting	Northing *
01	6050288.98	2286973.23
02	6050907.48	2286814.23
03	6050931.58	2286815.23
04	6051001.41	2286820.12
05	6051403.98	2286848.63
06	6051499.68	2286855.73
07	6051597.98	2286841.53
08	6051685.28	2286793.03
09	6051752.98	2286719.43
10	6051802.88	2286632.53
11	6051831.38	2286535.83
12	6051843.48	2286433.23
13	6051831.88	2286287.43
14	6051787.78	2285974.53
15	6051805.28	2285840.53
16	6051835.58	2285744.63
17	6051877.28	2285652.73
18	6051923.38	2285563.03
19	6051977.78	2285479.33
20	6052040.08	2285401.03
21	6052077.88	2285367.63
22	6052122.78	2285346.23
23	6052170.88	2285332.93
24	6052235.18	2285325.83
25	6052335.48	2285377.23
26	6052421.78	2285443.43
27	6052493.18	2285560.83
28	6052572.18	2285516.13
29	6052509.68	2285405.83
30	6052456.78	2285338.13
31	6052387.58	2285269.13
32	6052320.38	2285222.73
33	6052252.28	2285195.03
34	6052191.98	2285196.73
35	6052097.88	2285229.63
36	6052013.38	2285283.03
37	6051939.48	2285350.73
38	6051871.88	2285424.23
39	6051810.38	2285502.53
40	6051752.68	2285584.43
41	6051707.18	2285673.83
42	6051672.88	2285767.93
43	6051650.58	2285865.63
44	6051643.88	2285965.93
45	6051694.48	2286429.73
46	6051684.98	2286505.63
47	6051665.48	2286574.23
48	6051637.58	2286635.43
49	6051600.38	2286683.83
50	6051556.58	2286716.13
51	6051495.28	2286740.33
52	6051410.88	2286748.23
53	6051008.42	2286719.98
54	6050938.58	2286715.23
55	6050896.48	2286713.23
56	6050275.88	2286876.23

Angle Point	Easting	Northing *
C01	6050288.98	2286924.23
C02	6050902.98	2286763.23
C03	6050935.18	2286765.23
C04	6051005.08	2286769.23
C05	6051407.48	2286798.23
C06	6051497.48	2286797.23
C07	6051577.28	2286778.23
C08	6051642.88	2286736.23
C09	6051695.28	2286877.23
C10	6051735.08	2286803.23
C11	6051758.18	2286520.23
C12	6051768.98	2286433.23
C13	6051757.48	2286293.23
C14	6051715.78	2285969.23
C15	6051726.38	2285870.23
C16	6051734.08	2285824.23
C17	6051771.38	2285709.23
C18	6051814.98	2285618.23
C19	6051866.88	2285532.23
C20	6051924.78	2285451.23
C21	6051976.68	2285391.23
C22	6052004.68	2285360.23
C23	6052045.68	2285325.23
C24	6052110.38	2285287.23
C25	6052193.78	2285262.23
C26	6052243.68	2285260.23
C27	6052295.78	2285283.23
C28	6052361.48	2285322.23
C29	6052414.98	2285370.23
C30	6052468.78	2285428.23
C31	6052532.68	2285538.23



	Federal Navigation Channel		Beacon, General	Contours — -10 — -9 — -8 — -7 — -6
	Shoaling Area		Obstruction Point	
	Placement Area		Navigation Buoy	
	Anchorage Area		Navigation Buoy	
	Wreck Area		Shoalest Sounding*	
	Submerged Wreck			
	Angle Point			

NOTES:
HORIZONTAL COORDINATE SYSTEM: NORTH AMERICAN DATUM OF 1983 (NAD83), PROJECTED TO THE STATE PLANE COORDINATE SYSTEM (SPCS), CALIFORNIA ZONE II. DISTANCE UNITS IN U.S. SURVEY FEET.
VERTICAL DATUM: SOUNDINGS ARE SHOWN IN FEET AND INDICATE DEPTHS BELOW MEAN LOWER LOW WATER.
THE INFORMATION DEPICTED ON THIS MAP REPRESENTS THE RESULTS OF A SURVEY CONDUCTED ON THE DATE INDICATED AND CAN ONLY BE CONSIDERED TO REPRESENT THE GENERAL CONDITION EXISTING AT THAT TIME.
PLANE GRID, BEARING AND COORDINATES ARE BASED ON THE STATE OF CALIFORNIA COORDINATE SYSTEM, LAMBERT CONFORMAL PROJECTION, ZONE II NAD 83, CALIFORNIA, AS DESCRIBED IN SPECIAL PUBLICATION NO. 235, PUBLISHED BY NATIONAL OCEAN SURVEY. BASE MAPS ARE USDA NAIP 2010.
*SHOALEST SOUNDING PER QUARTER PER REACH

DRAWING NOT TO BE USED FOR NAVIGATION. ONLY CHANNEL CONDITION AT DATE OF SURVEY. THE LOCATION OF ALL NAVIGATION AIDS ARE BASED ON INFORMATION PROVIDED BY THE U.S. COAST GUARD. BUOY LOCATIONS REPRESENT THE POSITION OF THE SINKER ONLY. SOUNDINGS FOR THE OUTSIDE CHANNEL (100 FT. WIDE) TAKEN BY FATHOMETER; THE INSIDE CHANNEL (60 FT. WIDE) TAKEN BY LEADLINE, AND ARE SHOWN TO THE NEAREST FOOT AND TENTHS OF A FOOT. SOUNDINGS ARE BASED ON THE DATUM OF MEAN LOWER LOW WATER AT THE LOCALITY, NAVD 88.
THE PROJECT DEPTH IS 10 FEET.
VERTICAL CONTROL: B.M. "BAKER", COE DISK, 13.98' MLLW NGVD 29 DATUM
HORIZONTAL CONTROL: COAST GUARD D-BEACON

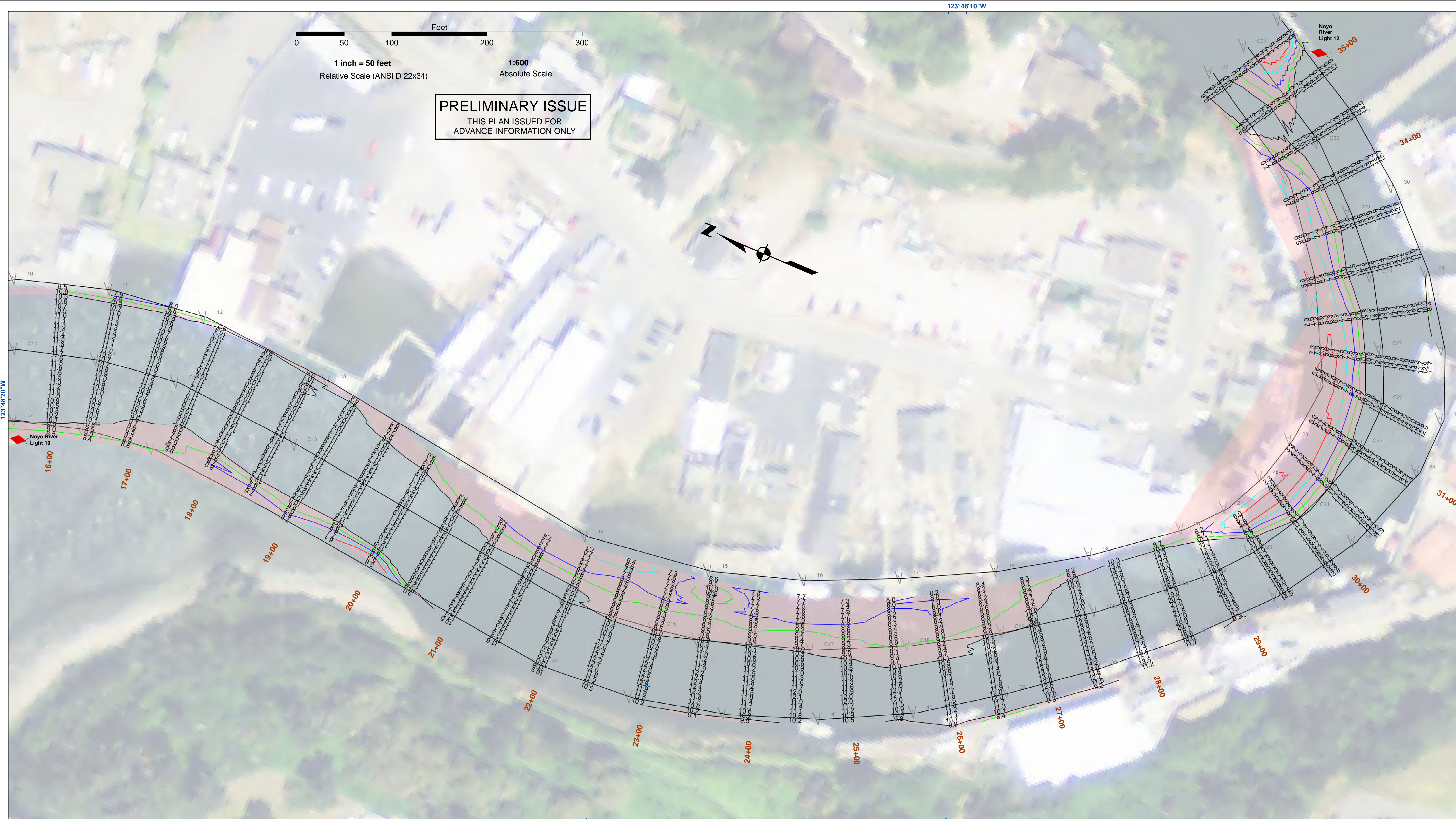
US Army Corps of Engineers
San Francisco District
1455 Market Street
San Francisco, CA 94103

DISCLAIMER: The United States Government furnishes no express or implied warranty, express or implied, concerning the accuracy, completeness, or reliability of the data furnished. The user is responsible for the results of any application of the data for other than its intended purpose. These data belong to the Government. Therefore the recipient may not transfer these data to others without also transferring this disclaimer.

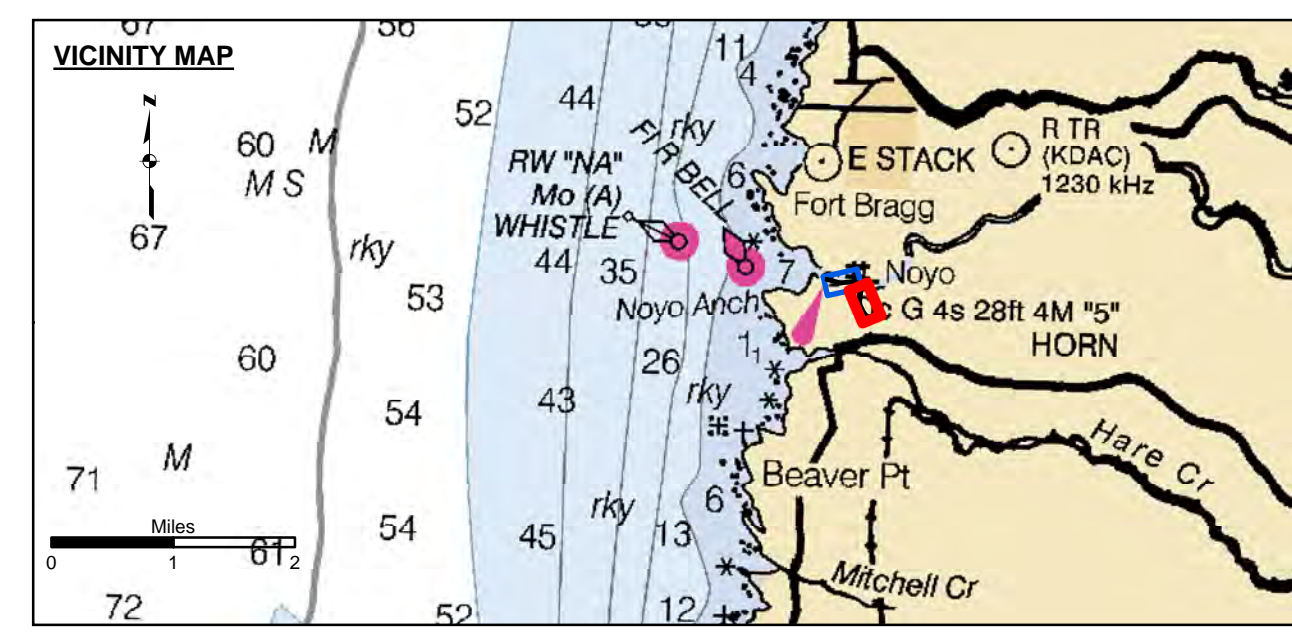
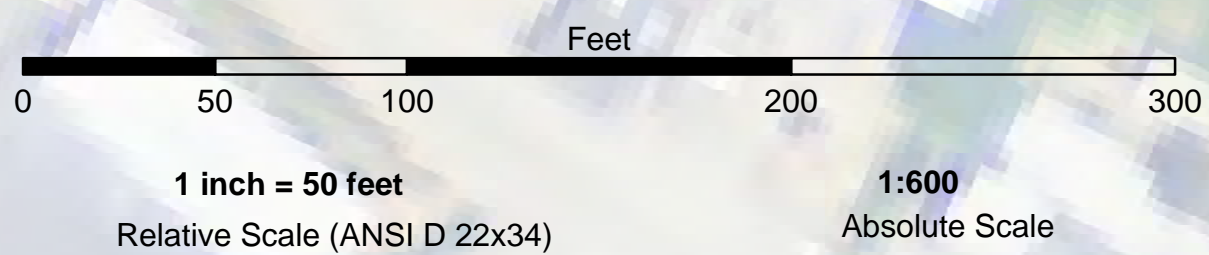
Chart Date:	Aug 21, 2017
Designed by:	PDT
Drawn by:	PDT
Checked by:	PDT
Approved:	Chief, Construction Branch

CALIFORNIA
NOYO RIVER
CONDITION SURVEY
09 AUGUST 2017

Sheet Reference Number
1 of 2



PRELIMINARY ISSUE
THIS PLAN ISSUED FOR
ADVANCE INFORMATION ONLY



Federal Navigation Channel	Beacon, General	Contours
Shoaling Area	Obstruction Point	
Placement Area	Navigation Buoy	
Anchorage Area	Navigation Buoy	
Wreck Area	Shoalest Sounding*	
Submerged Wreck		-10
Angle Point		-9
		-8
		-7
		-6

NOTES:
HORIZONTAL COORDINATE SYSTEM:
NORTH AMERICAN DATUM OF 1983 (NAD83), PROJECTED TO THE STATE PLANE COORDINATE SYSTEM (SPCS), CALIFORNIA ZONE II. DISTANCE UNITS IN U.S. SURVEY FEET.

VERTICAL DATUM:
SOUNDINGS ARE SHOWN IN FEET AND INDICATE DEPTHS BELOW MEAN LOWER LOW WATER.

THE INFORMATION DEPICTED ON THIS MAP REPRESENTS THE RESULTS OF A SURVEY CONDUCTED ON THE DATE INDICATED AND CAN ONLY BE CONSIDERED TO REPRESENT THE GENERAL CONDITION EXISTING AT THAT TIME.

PLANE GRID, BEARING AND COORDINATES ARE BASED ON THE STATE OF CALIFORNIA COORDINATE SYSTEM, LAMBERT CONFORMAL PROJECTION, ZONE II NAD 83, CALIFORNIA, AS DESCRIBED IN SPECIAL PUBLICATION NO. 235, PUBLISHED BY NATIONAL OCEAN SURVEY. BASE MAPS ARE USDA NAIP 2010.

*SHOALEST SOUNDING PER QUARTER PER REACH

DRAWING NOT TO BE USED FOR NAVIGATION. ONLY CHANNEL CONDITION AT DATE OF SURVEY. THE LOCATION OF ALL NAVIGATION AIDS ARE BASED ON INFORMATION PROVIDED BY THE U.S. COAST GUARD. BUOY LOCATIONS REPRESENT THE POSITION OF THE SINKER ONLY. SURVEYED BY THE CORPS OF ENGINEERS. SOUNDINGS FOR THE OUTSIDE CHANNEL (100 FT. WIDE) TAKEN BY FATHOMETER; THE INSIDE CHANNEL (60 FT. WIDE) TAKEN BY LEADLINE, AND ARE SHOWN TO THE NEAREST FOOT AND TENTHS OF A FOOT. SOUNDINGS ARE BASED ON THE DATUM OF MEAN LOWER LOW WATER AT THE LOCALITY, NAVD 88.

THE PROJECT DEPTH IS 10 FEET.

VERTICAL CONTROL:
B.M. "BAKER", COE DISK, 13.98' MLLW NGVD 29 DATUM

HORIZONTAL CONTROL:
COAST GUARD D-BEACON

US Army Corps of Engineers
San Francisco District
1455 Market Street
San Francisco, CA 94103

DISCLAIMER
The United States Government furnishes this information for the purpose of providing advance information only. The United States Government makes no warranty, expressed or implied, concerning the accuracy, completeness, or reliability of the information furnished. The user is responsible for the results of any application of the data for other than its intended purpose. These data belong to the Government. Therefore, the recipient may not transfer these data to others without also transferring this disclaimer.

Prepared Under the Direction of JOHN K. BAKER LT Colonel, C.E., District Engineer	Surveyed By:	Chart Date:
Submitted: Hydro Survey Team Leader	Plotted By: PDT	Aug 21, 2017
Recommended: Chief, Hydro Survey Section	Checked By: PDT	Designed by:
Approved: Chief, Construction Branch	Drawn by: PDT	Drawn by:

CALIFORNIA
NOYO RIVER
CONDITION SURVEY
09 AUGUST 2017

Sheet Reference Number
2 of 2